



MODULAR ELECTRONIC SEQUENCING VALVES

R-982-□

Electronic Piloted Sequence Valve

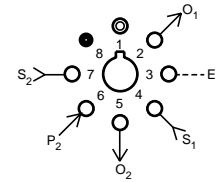
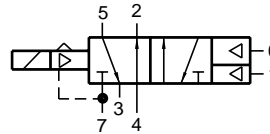


Features:

- Extremely low power consumption
- Patented micro gap valving for quick action, no blow by
- Standard octoport plug-in design
- Provides interface between electronics and pneumatics

Performance:

Working range (psig).....20 - 105
 Flow (SCFM @ 100 psig).....9
 Return pilot pressure (min).....20
 At port 6 (min).....20
 Temperature.....32° to 180° F
 Power consumption.....0.65



| | | |
|--------------|--|--------|
| Voltage..... | R-982-6 | 6 VDC |
| | R-982-12 | 12 VDC |
| | R-982-24 | 24 VDC |
| Duty..... | Continuous duty at 150% of rated voltage | |

Description:

R-982 electronic sequence valve is essentially a hybrid valve consisting of the R-932 valve and the Clippard model ET-3 electronic/pneumatic valve. The ET-3 responds to low current, low voltage signals and pneumatically actuates the R-932 sequence valve to which it is attached.

R-984-□

Electronic Piloted Sequence Valve

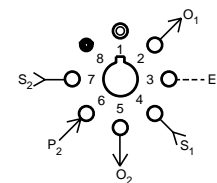
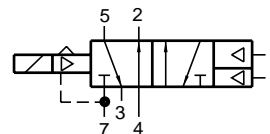


Features:

- Extremely low power consumption
- Micro gap construction - snap action and no blow by
- Standard octoport plug-in design
- Provides interface between electronics and pneumatics

Performance:

Working range (psig).....20-105
 Flow (SCFM @ 100 psig).....9
 Return pilot pressure (min).....20
 At port 6 (min).....20
 Temperature.....32° to 180° F
 Power consumption.....0.65



| | | |
|--------------|--|--------|
| Voltage..... | R-984-6 | 6 VDC |
| | R-984-12 | 12 VDC |
| | R-984-24 | 24 VDC |
| Duty..... | Continuous duty at 150% of rated voltage | |

Description:

The R-984 electronic sequence valve is essentially a hybrid valve consisting of the R-934 valve and the Clippard model ET-3 electronic/pneumatic valve. The ET-3 responds to low current, low voltage signals and pneumatically actuates the R-934 sequence valve to which it is attached.